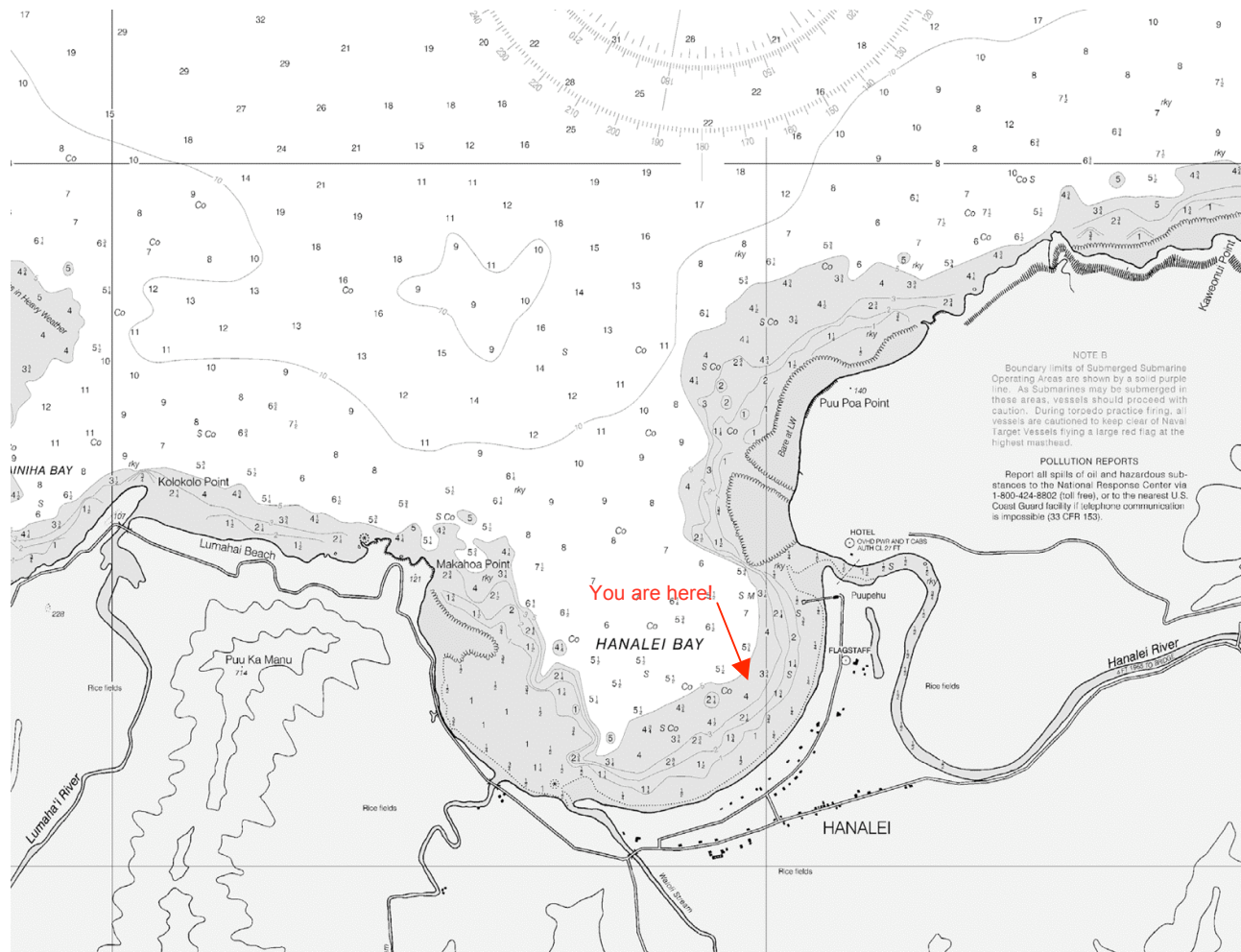




Transpac Seminar #8 - Shipping the Boat Back & Sailing to Oahu





Shipping & Contact Information

Also see <http://www.pacificcup.org/node/32>

Shippers:

Matson Customer Service
Shelley Boswell
800-4MATSON

SBoswell@matson.com

*drop trailer off and pick boat up in Point Richmond

'06 ~ \$3998

Load-a-Boat

*operates out of San Diego

Larry Cummins
619.792-5200

larry@loadaboat.com

Trailer Movers in Honolulu:

*make sure you consign your trailer to Matson under the haulers name

Todd Liddy

2918 Kolomona Pl Honolulu 96022

808.988-5650

808.306-8788 mobile

Akana Trucking

Kevin Akana

808.845-9825

'06 ~ \$100 trailer to marina

'06 ~ \$74/hr 2 hr min trailer to Matsons

'06 ~ \$50 permit fee. (covers license and safety check)

Yards In Honolulu:

Keehi Marine Center (closest to Matson)

Frank

24 Sand Island Access Rd. Honolulu

808.845-6465

'06 ~ \$860

Ala Wai Marine

808.946-4213



-The boat must be extremely secure on its trailer

--Keel should be "boxed" in

--Need to prevent uplift as well as fore and aft lateral movement with strapping



Sailing to Oahu. Advice from seasoned veterans

Ahoy SSSTP sailors!

I don't know how many of you, if any, are planning to ship your boats home from Honolulu after the SSSTP, but I was talking to Kim Ickler (sailor from Hawaii) at the recent Pac Cup seminar and I asked her if she had any tips or input regarding sailing from Hanalei to Honolulu, when/how to cross the channel, and preferably arriving in Honolulu during daylight hours. She queried a couple of "old salts" on my behalf and here is what she/they have to say on the matter.

1) Noodle (Bill Leary) says: As I recall it is approximately a 125 mile trip. In a typical 35-40 foot racer/cruiser that would be expected to do 5-1/2 knots on the wind, I would leave Hanalei in the morning and sail out on starboard (an hour or so) until I could comfortably clear Kauai on port. Once clear of the island on port tack you can usually crack sheets slightly and aim directly for Barbers Point. You'd probably hit the lee of the island in the middle of the night, turn on the engine and power until you hit the trades at Barbers point - should be about sunrise. Then you have a leisurely sail up the coast to Keehi or Ala Wai arriving sometime during the afternoon. Make sure the engine works. I wouldn't want to guess how long it would take without an engine to get through Waianae.... I recall a story about Americana coming back from Kauai and getting caught in the lee with an engine that wasn't working. They ended up calling the Coast Guard for a tow because they didn't want to wait for wind! If the trip takes longer than expected you could overnight in Pokai or Koolina.

I've done the trip from Hanalei to Kaneohe in 33 hours on Tangaroa. Hard on the wind we came in at about Haleiwa so it should be a close reach to Barbers Point. I was talking about this trip with John Brack the other night, and he laid Kahuku on port after putting in a long starboard tack right out of Hanalei. No point in giving too much away though by staying on starboard if you are going to Honolulu. I can't see much value in staying high on port across the channel either. Why beat your brains out when you can crack off a bit, pick up some speed and aim directly for your destination?

Hope this helps. Noodle

Bill Leary, P.E.

NFESC Drydock Consultant

2) Kim adds: Years ago Noodle's Dad said "if you're going from Hanalei to Kaneohe, leave early, go starboard tack until you think you can lay Kahuku" (eight hours or so on Kanaloa) and then "flop over" and go home. Worked for us. We've typically taken 36 hours to Kaneohe but weren't sure about the trip to the leeward side.

Hope the above info from the local point of view is of some help/interest to those of you planning to make the journey across the channel.

Sylvia

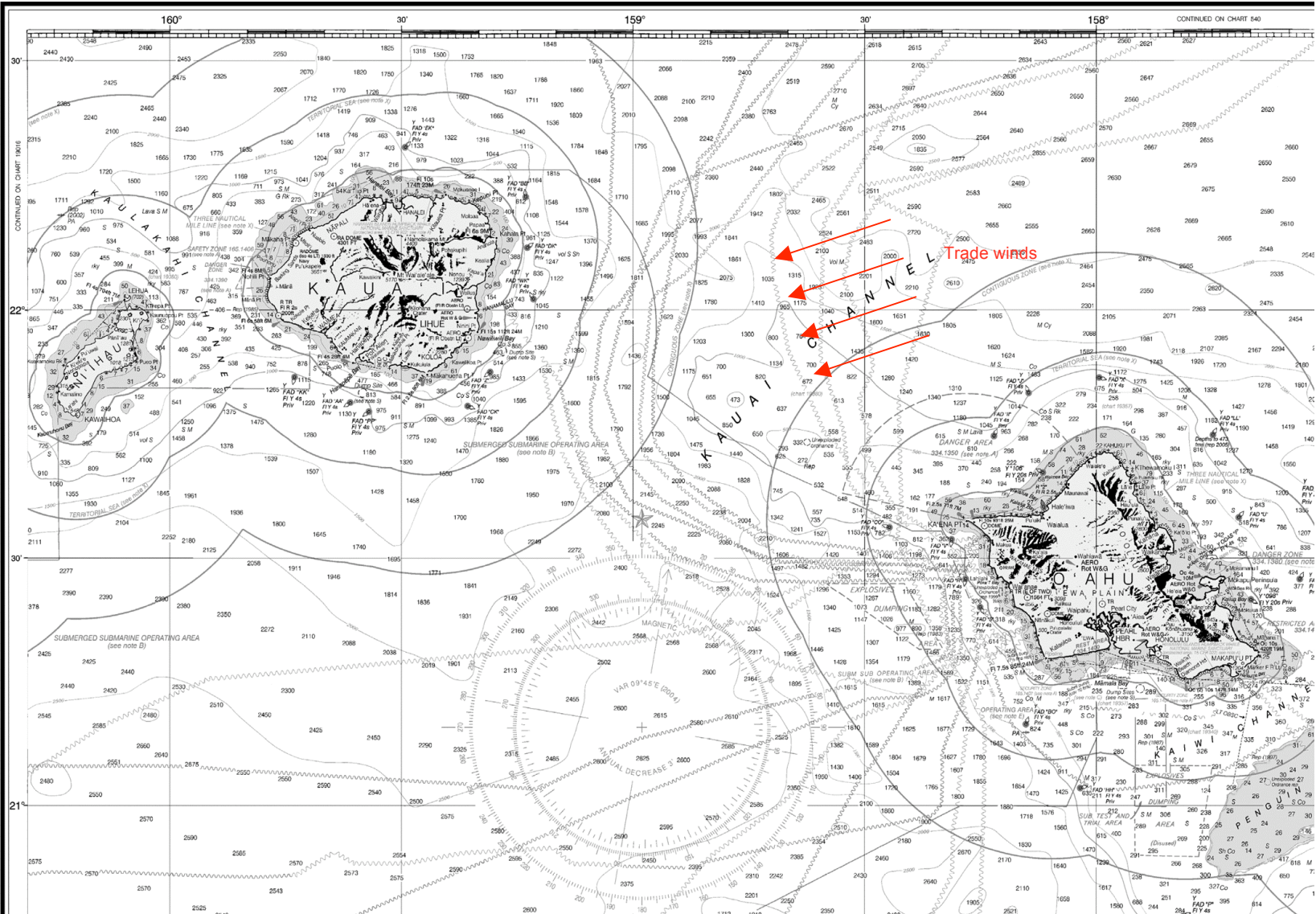
Posted: Tue Mar 21, 2006 10:10 pm Post subject:

Noodle has it right. Leaving Hanalei for Hono at dawn often lets you motorsail seven miles up to Kilauea Pt. using the offshore drainage winds found late night along the north shore of Kauai. From Kilauea Pt take off on a port tack close reach heading for Barbers Point on Oahu steering about 120 magnetic. This leg is 94 miles. No worries about staying high or on the rhumbline. Sag off as needed to keep the boat moving and comfortable. Mid channel, the Kauai Channel can get boisterous with 25 knot trades from 060-070 magnetic, and 8-12 foot seas. So be ready with a reef, small jib, harness, and sunscreen. The good news is you slowly get lifted as you approach Oahu, and end up port tack reaching in smoother conditions until hitting the Waianae hole (lee of Oahu) abeam of Kaena Pt. Then motor in smooth water to Barbers point, arriving there about dawn. Mind the restricted area around the tanker buoys at Barbers, then enjoy a smooth water beat of about 13 miles along the south shore of Oahu to Hono. Once well past Barbers Pt, an occasional short starboard tack will keep you in smooth water provided by the well defined reef. Arrival at Keehi about mid-morning. Not a difficult passage unless the trades are puffing, in which case waiting a day or two seems to let them deflate. A good bailout option is Nawiliwili Harbor if you have to turn back for any reason. sleddog



Kauai to Oahu

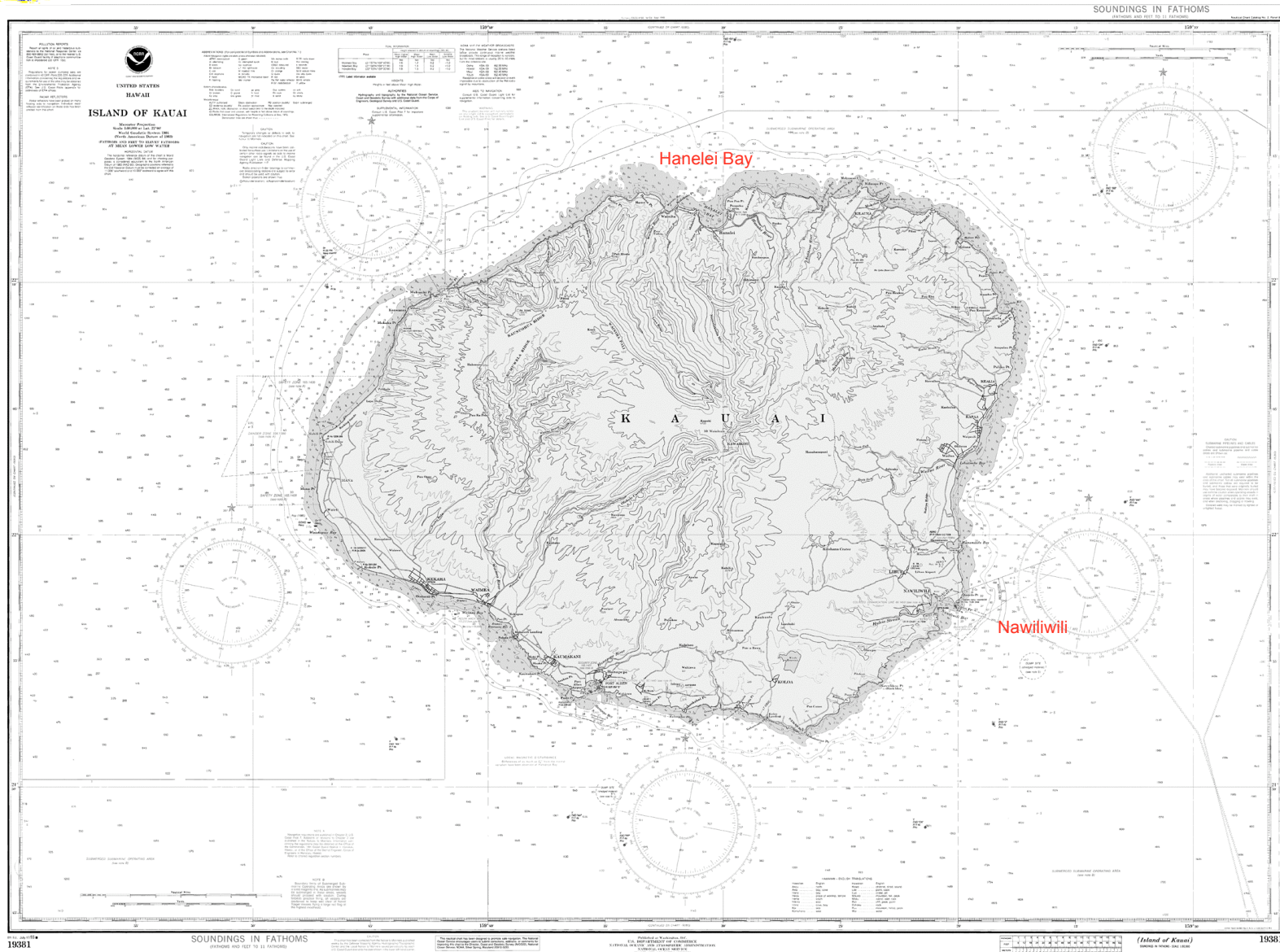
19004



2008 Singlehanded Transpac

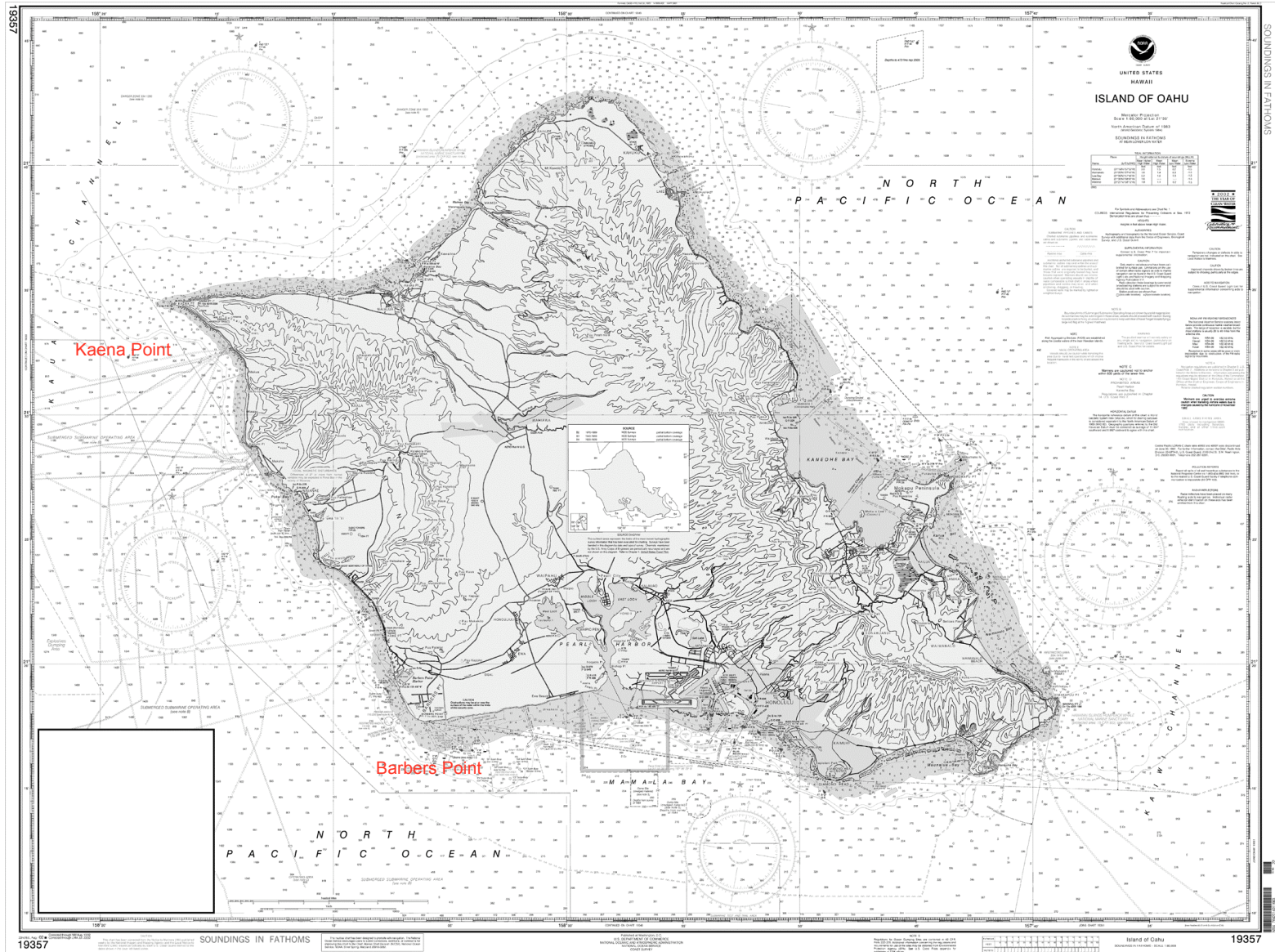


Kauai





Oahu





Honolulu

