

Half Moon Bay Race – VHF Communications

- All boats need to check in on VHF 69 before the race
- All starting signals will be communicated via VHF 69 and horns (no flags)
- Racers self-record finish time at HMB. RC will not be on station at finish.
- Pillar Point Harbormaster is available on VHF 74 (or 650-726-4382) to inquire about slip availability in the inner harbor

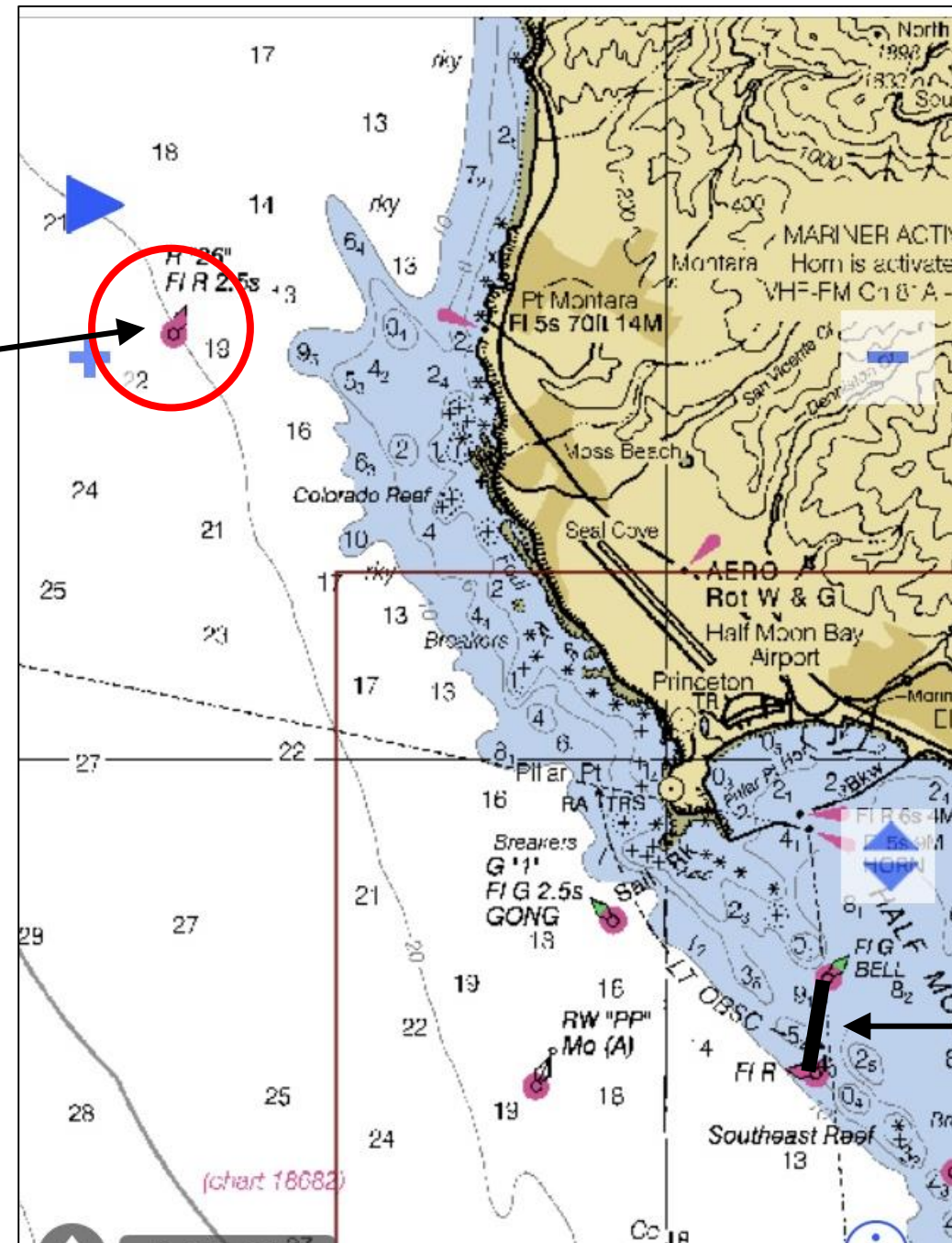
CLASS FLAGS AND STARTING SEQUENCE

Flag	Class	Estimated Warning Signal	Estimated Start Time
C	Multihulls	09:55	10:00
D	Non-Spinnaker	10:00	10:05
E	PHRF 160 and Over	10:05	10:10
F	PHRF 109 to 159	10:10	10:15
G	PHRF 108 and Under	10:15	10:20
H	<u>Sportboats</u>	10:20	10:25

- Start is between Golden Gate Yacht Club and “X” buoy off SF city front
- Later start chosen to avoid the flood (10:54 slack going to ebb at SF entrance)
- Singlehanded and doublehanded boats start in same class

Colorado Reef Mark

Must pass outside of
Colorado Reef Buoy
(R "26" FI R 2.5s)

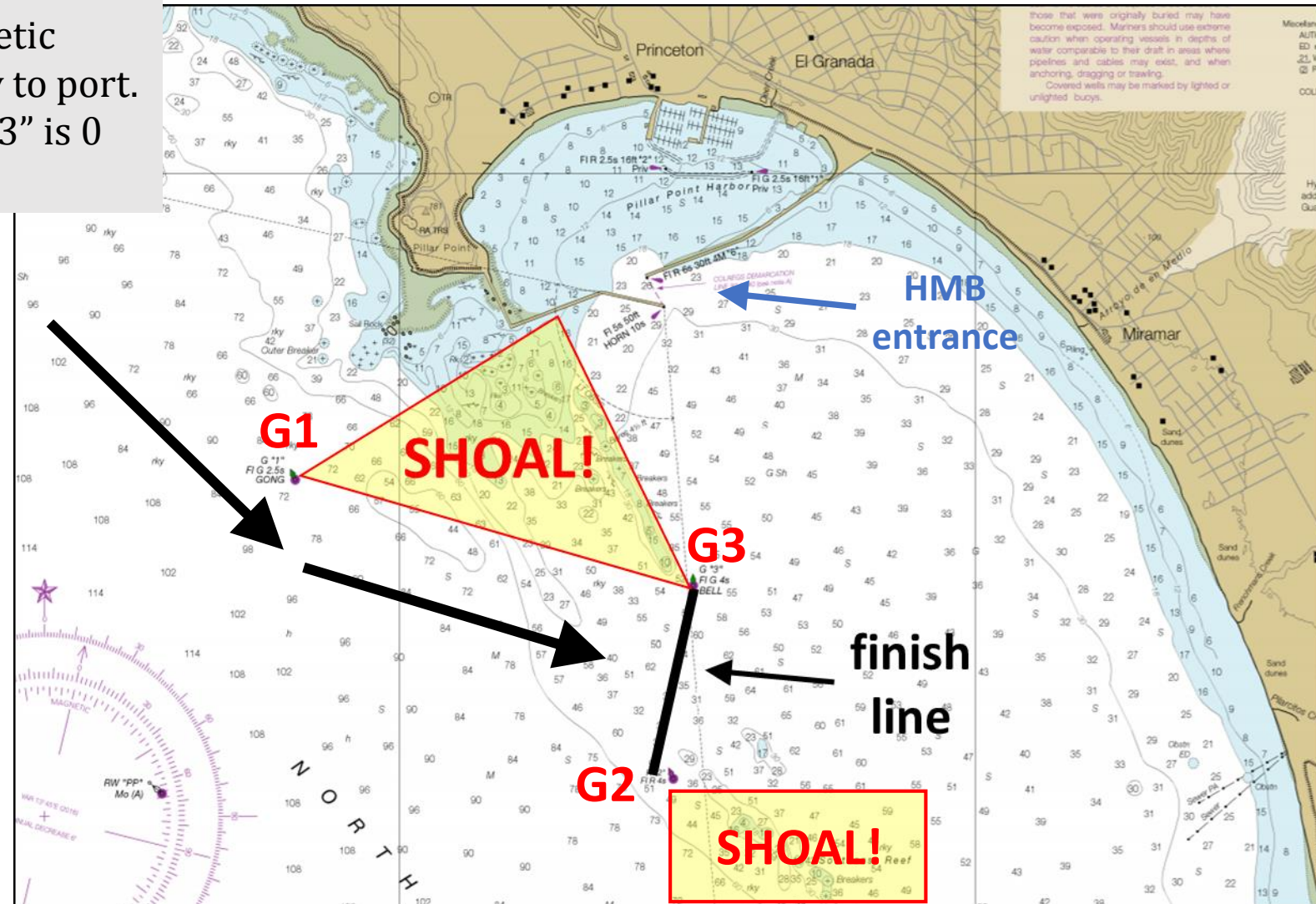


Half Moon Bay Finish Line

HALF MOON BAY FINISH

The finish line extends at 180 degrees magnetic from buoy G "3" Fl G 4s BELL; leave the buoy to port. A boat finishes when the bearing of buoy G "3" is 0 degrees magnetic.

- Racers record own times
- Note boats ahead/behind
- Report to RC ASAP:
 - voicemail: 866-724-5777
 - email: racechair@sfbaysss.org

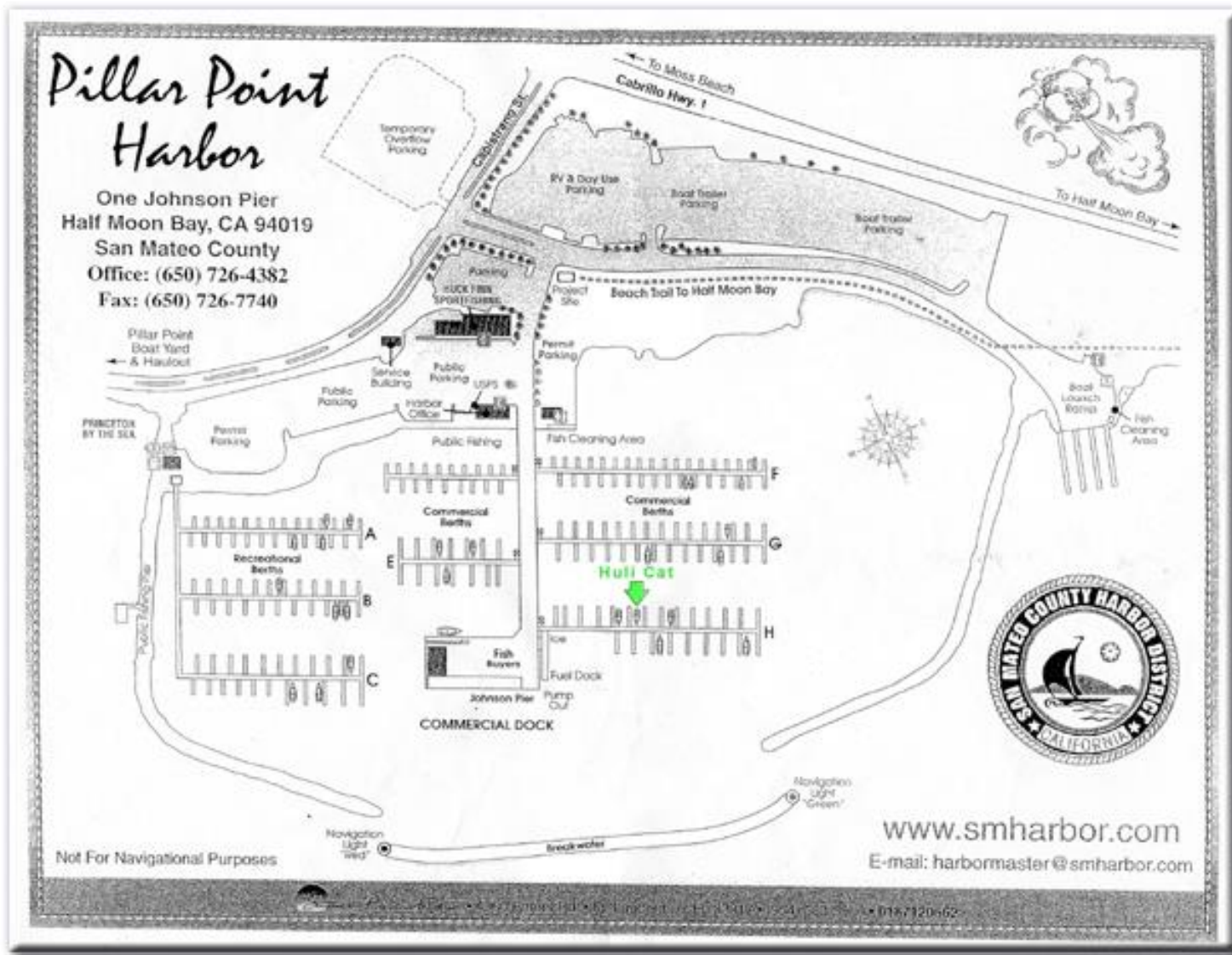


HMB / Pillar Point Harbor



Pillar Point
Harbor

Pillar Point Harbor



- Asst. Harbor Master Dante Madrigal available @ 415-606-3986 to answer questions
- Hail harbor patrol on 16 or 74
- Should be able to accommodate min. 10 boats

Half Moon Bay Yacht Club

